

Project focus on Key Biodiversity Areas (KBA) , Special Unique Marine Areas (SUMAs) and community Conservation Areas in three provinces of Sanma, Malampa and Shefa

## STAKEHOLDER PARTNERS

As a leading government department driving and coordinating Conservation areas activities and initiatives in Vanuatu, The DEPC through ECARE Project shall work in close collaboration with these key partners:

- Relevant Government Sectors
- Relevant Non-Governmental Organization (NGO)
- Vanuatu Coastal Adaptation Project 2 (VCAP 2)
- GEF 5 Integrated Sustainable Land and Coastal Management (ISLCM) Project
- Vanuatu Kaljoral Senta (Vanuatu Cultural Centre (VCC)
- Relevant private sectors

## “PRESERVATION AND PROTECTION OF OUR NATURAL RESOURCES AND HERITAGE”

### BACKGROUND

The Department of Environmental Protection and Conservation is implementing a GEF-6 funded Expanding Conservation Areas Reach and Effectiveness (ECARE) Project with the international Union of Conservation for Nature (IUCN) as its implementing agency. The project was established in July 2023 initially with the recruitment of its project management unit (PMU) staff and with implementation of the potential project sites profiling, covering Protected or Conservation Areas in three provinces of the Republic of Vanuatu . The rest of the project activity will comment implementing after the inception workshop in collaborated with project partner

### Project Contact:

Donna Kalfatak  
National Project Manager  
**Email:** [dkalfatak@vanuatu.gov.vu](mailto:dkalfatak@vanuatu.gov.vu)

Kency Nabinmal  
National Project Officer  
**Email:** [kalvanukency@gmail.com](mailto:kalvanukency@gmail.com)

DEPC, Number 2 Area  
Port Vila, Vanuatu.  
Telephone: 33430 / 22173

**Visit us on the Facebook page:**  
**ECARE Project**

## EXPANDING CONSERVATION AREAS REACH AND EFFECTIVENESS (ECARE)

# THE DEPARTMENT OF ENVIRONMENT- ECARE PROJECT PROFILE



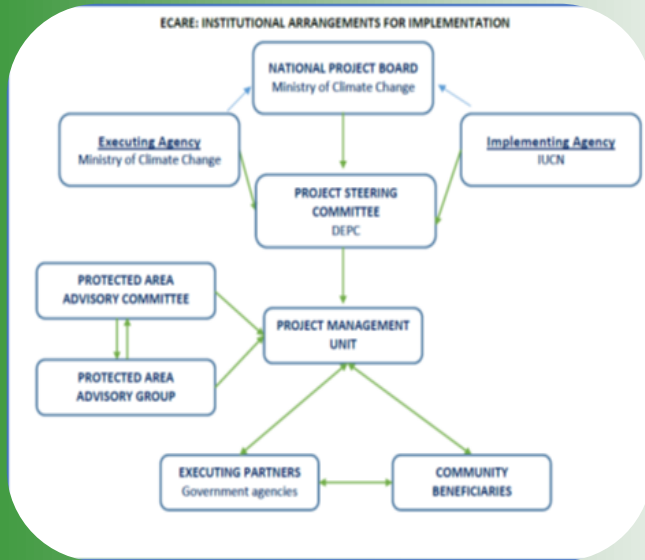
Efate, CCA management committee (ECARE potential target CCA)



JULY 2023

**ECARE PROJECT**

“Project Implementing Partners”



Implementation arrangements

## Project Profile

### Name:

Expanding conservation areas reach and effectiveness (ECARE).

### Ministry Responsible:

Ministry of Climate Change and Natural Disasters.

### Number of Staffs:

The ECARE project have 4 permanent posts.

- Chief Technical Advisor
- National Project Manager
- National Project Officer
- National Administration & Financial Officer

### When it was formed:

July 2023.

### Location:

The project is located at Number 2 Area within the vicinity of the Department of Environment Protection and Conservation (DEPC). Ministry of Climate Change, Meteorology and Geohazards, Energy, Environmental and Disaster Management

## Mission

To support by enhancing the capacity of the local communities, traditional land owners/holders, local management committees and the provincial governments to effectively manage their PAs or community conservation areas through the assessment of existing management systems and establish tools for effective management .

## Aim

To assist traditional and formal conservation in their management efforts to respond to the current environmental threats by developing peer to peer visits and training to enhance management and implement improved nature-based solutions in a range of conservation areas, including those with livelihoods and income generating potential

## Objective

To improve systems and capacity at all levels to achieve a representative, effective and expanded protected areas network in Vanuatu .



The FAO GEF 5 ISLCM and ECARE Projects Office Building

## KEY COMPONENTS

### **Component 1:** [Vanuatu Framework and Strategy for Registering Protected Areas \(PAs\).](#)

- This component will support the government to have in place an updated legal framework and policy for Protected Areas (PAs) in Vanuatu covering terrestrial, coastal and offshore areas. Additionally, it will work with the respective government departments and NGOs to develop tools and process guidelines for PAs designation, management planning and effectiveness, and to ensure that the integration of Area Council development plans, are enhanced and developed.

### **Component 2:** [Protected Area Management Planning, Capacity Building and communications.](#)

- This component will support the community, provinces and the national government to build capacity of management committee to effectively manage protect area and establish expanding protection area network in Vanuatu

### **Component 3:** [Financial Sustainability of Protected Areas.](#)

- This component will help the government and provinces to assess the cost of running a protected area network and involve the PAs related eco-tourism activities and Agri-tourism to support the community and customary landowners and landholders. To ensure the long term protection of the protected areas or community conservation areas, the project will assist the community with sustainable community livelihoods initiatives .